

# INTEGRATED DISEASE SURVEILLANCE AND RESPONSE (IDSR) WEEK 05 (27 JANUARY TO 02 FEBRUARY 2020)

## Surveillance Report

Surveillance and Disease Intelligence Unit  
Zambia National Public Health Institute

**Citation Style For This Article:** Surveillance and Disease Intelligence Unit. Intergrated Disease Surveillance and Response. Health Press Zambia Bull. 2019; 4(01); pp 10-19.

### Weekly Summary

#### Current outbreaks and public health threats

- **cVDPV Outbreak:** No new confirmed cases have been reported.
- **Measles Outbreak:** Cumulatively, 24 cases were reported in Kasama district, Northern province with 6 testing positive for Measles IgM.
- **Poliomyelitis:** PV2 detected from three contacts in Kalabo district, Western province.
- **Coronavirus: Covid-19** surveillance ongoing, especially at points of entry.

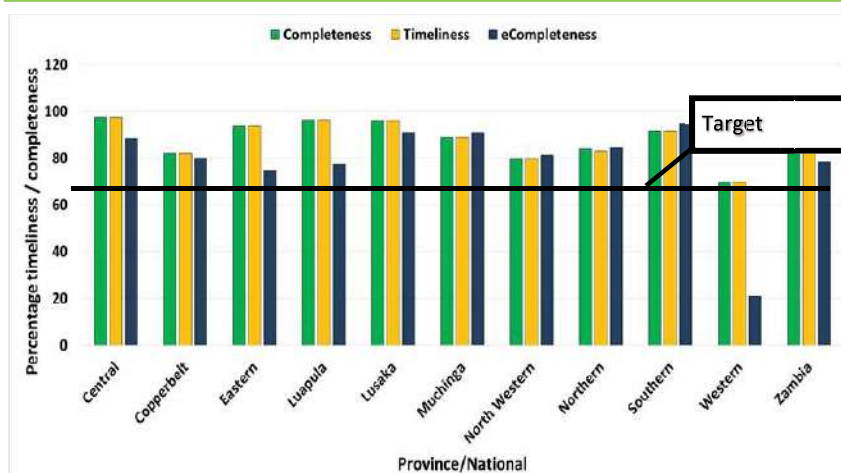
#### Immediately notifiable diseases

- **Acute Flaccid Paralysis (AFP):** One case was reported this week from Mumbwa district, Central Province.
- **Maternal Deaths:** 14 maternal deaths were recorded in Lusaka (8), Southern (2), North-western (1) and Northern (3) provinces.
- **Measles:** 6 suspected measles cases were reported in Northern (4) and Central (2) provinces and two samples were sent for laboratory investigation.

#### Other diseases/events

- **Typhoid:** 9 suspected cases were reported from North-western (4), Lusaka (3), Northern (1) and Eastern (1) provinces. One sample sent for laboratory investigation tested positive for Typhoid.
- **Event Based Surveillance:** Reports of random incidents of gassing households in several districts have been reported countrywide. Investigations are underway.

#### Paper and Electronic Timeliness and Completeness, Health Facility Level



#### Provincial Report Timeliness

Province	WEEK 2	WEEK 3	WEEK 4	WEEK 5
Central	T	T	L	T
Copperbelt	L	T	L	L
Eastern	T	T	T	T
Luapula	T	T	T	T
Lusaka	T	T	T	L
Muchinga	T	NR	L	T
North Western	NR	T	T	L
Northern	T	T	T	T
Southern	T	T	T	T
Western	T	T	L	T

Paper Timeliness: 88% Paper Completeness: 88% Electronic Completeness: 78%

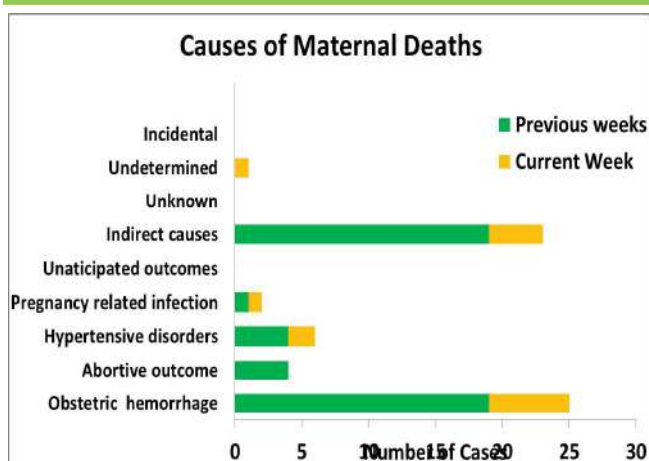
T=Timely L=Late NR=No Report

## Summary Report Priority Diseases, Conditions and Events (Week 5)

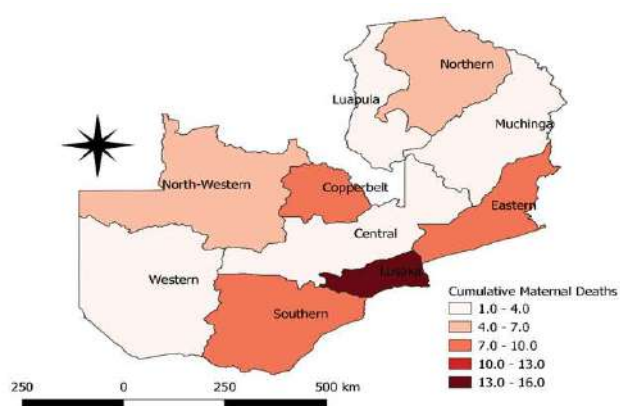
Disease/ Event / Condition	Week 5			Week 1-5 Cumulative		
	Suspected cases	Tested	Confirmed	Suspected cases	Tested	Confirmed
AFP	1	1	0	10	1	0
Cholera	0	0	0	3	3	0
Meningitis (Neisseria)	4	1	0	5	1	0
Measles	6	2	0	26	9	0
Neonatal Tetanus	1	0	0	1	0	0
Plague	0	0	0	0	0	0
Rabies	0	0	0	3	0	0
Dog bites	317			1,658		
Dysentery	888	11	8	4,045	49	37
Typhoid fever	9	1	0	37	8	2
Yellow fever	0	0	0	0	0	0
VHF	0	0	0	0	0	0
Anthrax	0	0	0	10	0	0
Influenza	0	0	0	0	0	0
Non Bloody Diarrhoea	14,213	0	0	60,170	0	0
Schistosomiasis (Bilharzia)	383	51	19	1,854	298	84
Malaria	230,079	225,184	128,010	1,007,731	807,152	456,859
HIV	38,985	34,471	1,875	151,337	129,031	7,321
Tuberculosis	2,740	2,722	212	12,427	9,820	986
Maternal Death	14			61		
<b>Total</b>	<b>283,640</b>	<b>262,444</b>	<b>130,124</b>	<b>1,248,378</b>	<b>946,372</b>	<b>465,289</b>

## Maternal Deaths

Week 5



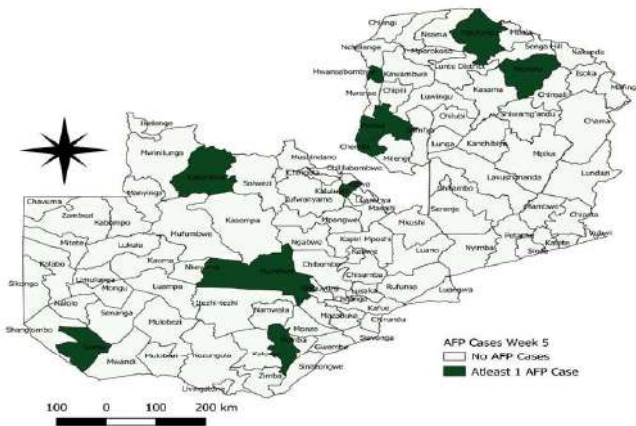
Cumulative Number of Maternal Deaths by Province



- 14 maternal deaths were registered this week.
- Obstetric hemorrhages and indirect causes continue to be the leading cause of maternal deaths.
- Lusaka province has been cumulatively recorded the highest number of deaths since week 1.
- In total 61 maternal deaths have been recorded since week 1.

AFP Surveillance

Districts with reported AFP Cases Week 1-5 2020

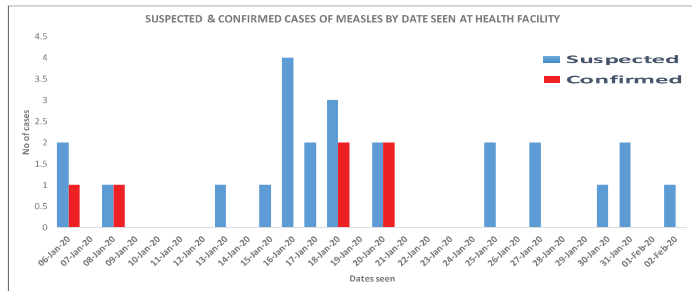


- One case of AFP was reported from Mumbwa district, Central province and samples were collected for investigation.
- Cumulatively, 10 AFP cases have been reported from ten districts in the last 5 weeks of this year.
- Results for all AFP cases are pending.
- As a result of the outbreak, non-AFP target rates is 4/100, 000 of the population below 15.
- Three samples from contacts of an AFP case in

- Kalabo district, Western province, have tested positive for PV2 and have been sent for sequencing.
- The total number of districts that have isolated type two poliovirus during this outbreak that started in October of 2019 now stands at four: Lusaka, Chiengi, Senga Hill and Chavuma districts.
- **The risk of cVDPV2 transmission in Zambia is high in districts that are: 1) Silent, 2) Not attaining Non-Polio AFP Rates of 4/100,000 or 80% stool adequacy, 3) Neighboring to countries with active outbreaks and 4) Having low IPV vaccination coverages.**

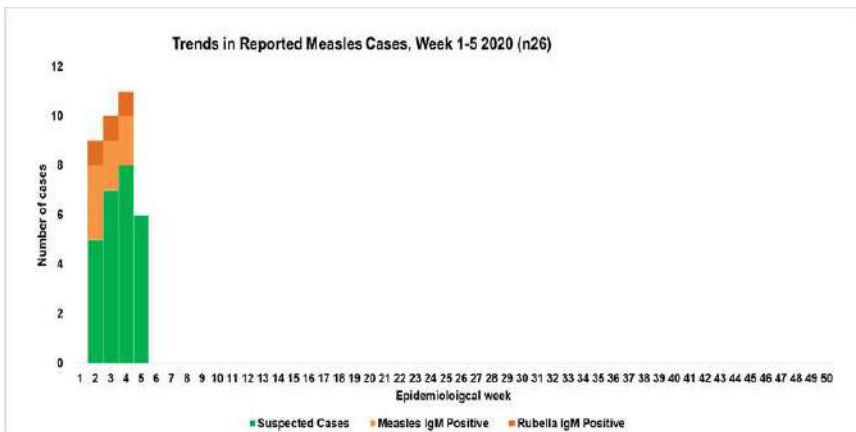
Poliovirus Environmental Surveillance (ES) Measles Outbreak

- The scheduled collections from the sites on the Copperbelt province were conducted.
  - Results for two ES samples collected in Week 48 2019 tested positive for Polio Virus type 3 Sabin Like (PV3 SL).
  - The samples were from Ngwerere and Chelstone districts treatment plants.
- \*\*\*no new data on ES has been availed\*\*



- A measles outbreak has been reported from Kasama district in Northern province .
- 24 cases cumulatively, 6 confirmed measles Igm and 0

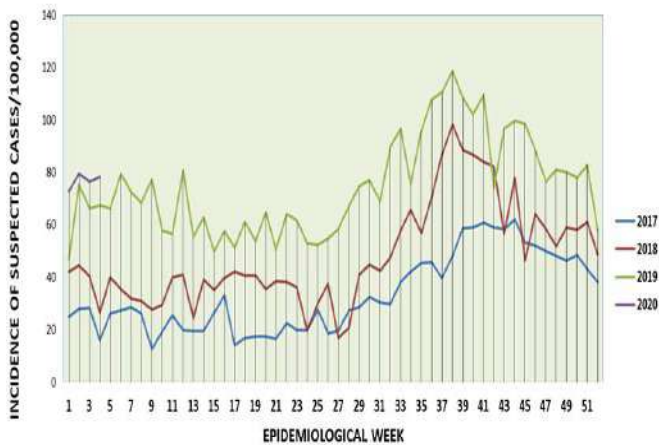
Measles & Rubella surveillance



- 6 suspected measles cases were reported this week.
- 2 cases were sent for laboratory investigated and results are pending.
- Positive measles Igm and Rubella from samples collected in the 2nd, 3rd and 4th week of the year were posted.

## Non-Bloody Diarrhoea

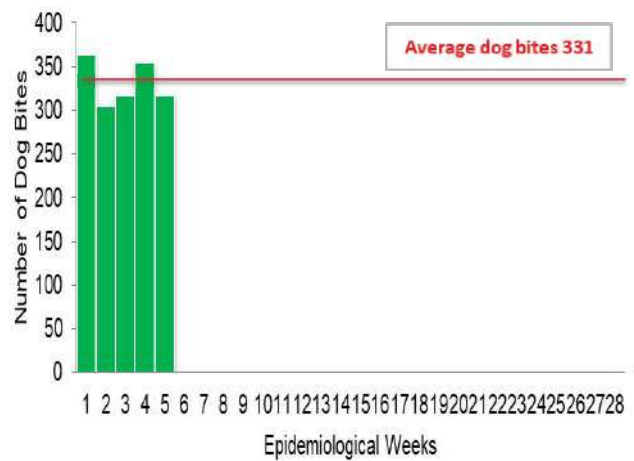
Incidence of IDSR Reported Health Facility Non Bloody Diarrhoea Cases 2017 to 2020



- Cumulatively, 69,170 cases of non-bloody diarrhea were reported from week 1 to week 5 2020.
- The highest number of cases reported are from Lusaka and Copperbelt province representing 16.3% (11261) and 16% (11078), respectively .

## Dog Bites

Trends of Dog Bites Week 1 to 5, 2020 (n1658)



- Cumulatively, 1658 dog bites have been reported from Week 1 to Week 5.
- Dog bites surveillance serves as a proxy for rabies surveillance both in the human and animal health system

## Regional Public Health Events (Cases/Case Fatality Rate)

Ebola	Measles	Cholera	Poliovirus (c VDPD)	Plague
DRC : 3,423 CFR 66.0%	DRC: 11,608 CFR 1.30%	DRC: 1,460 CFR 1.90%	Angola: 71 CFR 0.0%	DRC: 48 CFR 16.70%
			DRC: 84 CFR 0.0%	

## Early Warning Diseases

### Ebola Virus, DRC 2018-2020

- 7 new confirmed EVD cases and 6 deaths were recorded from DRC outbreak in the week under review.
- Cumulatively, 3,423 suspected cases, 3,305 confirmed cases and 2,250 deaths (CFR is 66%) have occurred since the outbreak.
- Total number of health workers affected with EVD remains at 172 representing 5%.
- **Though number of new cases seem to be reducing, the regional risk of spread remains high.**

### Measles, DRC 2020

- The period covering week 1 to week 3, 2020 a total of 11,607 cases have been reported and 151 deaths (CFR 1.30%).
- There was an increased number of new cases reported in week 1 of 2020 compared to week 52 of 2019.
- Cumulative number of cases and deaths from the onset of the outbreak in 2019 now stands at 319,330 and 6,148, respectively .
- The number of measles Igm laboratory confirmed cases stands at 2,717.

\*\*\*For more information look up the WHO Weekly Bulletin on Outbreaks and Other Emergencies\*\*\*

## Public Health Actions

### Circulating Vaccine Derived Poliovirus Outbreak

- The national annualized Non Polio AFP detection rate has increased to 4 cases /100,000 of children detected under 15 years for provinces.
- Note all AFP cases are immediately notifiable and require immediate investigation with new case investigation forms.
- All districts are expected to conduct health facilities integrated supervisory active searches at priority sites as per recommended schedule.
- Provinces to ensure silent districts not reporting AFP/measles cases are supported for active surveillance of AFP cases.
- Provinces are to ensure health workers are sensitized for improved detection, reporting and investigation of suspected measles and AFP cases.

### Ebola Virus Disease Preparedness

- All provinces to strengthen EVD surveillance among all health care providers and raise community awareness of EVD prevention.
- Provide weekly reports in IDSR reports of active searches including zero reporting in at risk districts, including ports of entry.
- Ensure epidemic preparedness measures for detecting cases, sample testing/transportation and managing cases are effected.
- All border districts to strengthen point of entry EVD screening including facilitation of cross border monitoring and reporting of suspected EVD cases.

### Heightened Surveillance in Cholera Hotspots

- With the increased rainfall patterns and imminent flooding that raises risks for diarrheal diseases, cholera hotspots are encouraged to continue and intensify surveillance and review of epidemiological trends to quickly detect and respond to changes.
- All provinces and districts are further advised to have sufficient stock piles of chlorine (granular & soluble).
- Continue to provide health education to sensitize communities and health workers on cholera preventative measures.
- WASH continue water monitoring and distribution of chlorine in identified at risk populations.
- Provincial epidemic preparedness committees to engage all relevant government stakeholders and multisector partners required to prevent cholera outbreaks.

### Global Alert of the Coronavirus & Preparedness

- Orientation of staff at points of entry on coronavirus in all provinces is advised
- Screening at all points of entry to be strengthened especially at international points of entry.
- Circulation of awareness materials to the public and health personnel to be done as soon as possible
- Report all suspected patients to the central level immediately .
- Strengthen surveillance for all Influenza Like Illness (ILI) and Severe Acute Respiratory Illness (SARI)
- Case definitions to be made available and other IEC materials in health facilities and public places.
- A call centre has been established at ZNPHI and all queries should be channeled to the following numbers: **+260 96 4638726/+260 974493553/+260 95 3898941.**

**Reported by Surveillance and Disease Intelligence Unit:** Muzala Kapin'a, Nkomba Kayeyi, Moses Banda, Mazyanga M Liwewe, Victor Mukonka and Zambia National Public Health Institute (ZNPHI)