

INTEGRATED DISEASE SURVEILLANCE AND RESPONSE (IDSR) WEEK 13 (23 TO 29 MARCH 2020)

Surveillance Report

Surveillance and Disease Intelligence Unit
Zambia National Public Health Institute

Citation Style For This Article: Surveillance and Disease Intelligence Unit. Intergrated Disease Surveillance and Response. Health Press Zambia Bull 2020; 04(2); pp 21-25.

Weekly Summary

Current outbreaks and public health threats

- **COVID-19 (Coronavirus):** 27 confirmed cases, 0 deaths and 368 case were investigated and reported in the week under review. As of the 29th of March, a total of 29 confirmed cases and 0 deaths have been recorded.
- **cVDPV Outbreak:** No new confirmed cases were recorded this week.
- **Poliomyelitis:** One sample of PV1 has been isolated and sent for sequencing.
- **Measles Outbreak:** No new suspected cases were reported in the week under review from Lunte district of Northern province.
- **Cholera Outbreak:** No confirmed cases were reported from Itezhi-Itezhi districts of Central Province

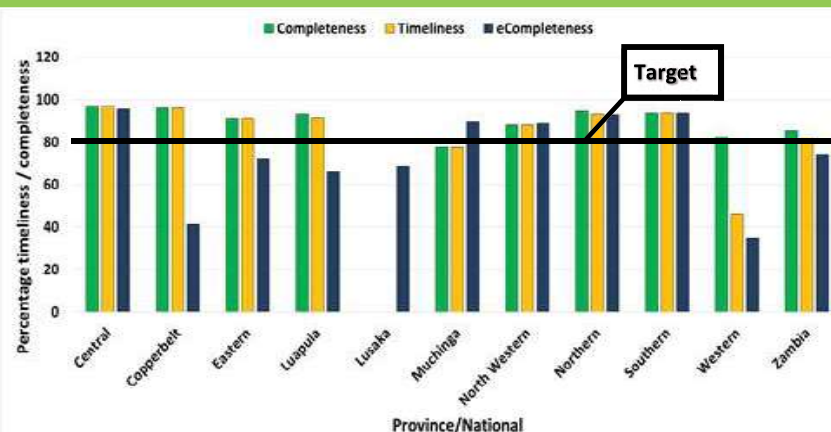
Immediately notifiable diseases

- **Acute Flaccid Paralysis (AFP):** Three cases were reported from North western (2) and Eastern (1) province.
- **Maternal Deaths:** Fourteen maternal deaths were recorded in Lusaka (5), Eastern (3), Muchinga (2) Northern (1), Central (1), Southern (1) and Luapula (1) provinces.
- **Measles:** Two suspected measles cases were reported in Western (1) and Southern (1) provinces.
- **Cholera:** Five suspected cases were reported from Kasama district of Northern province. Samples for all the cases were collected for laboratory investigation.

Other diseases/events

- **Mumps:** 273 suspected cases were reported from Southern (84), Central (73), Eastern (51), Copperbelt (34), North western (21), Western (6) and Luapula (4) provinces.

Paper and Electronic Timeliness and Completeness, Health Facility Level



Provincial Report Timeliness

Province	WEEK9	WEEK10	WEEK11	WEEK12	WEEK13
Central	L	T	T	L	L
Copperbelt	T	T	L	L	T
Eastern	T	T	L	L	L
Luapula	T	T	T	T	T
Lusaka	T	L	NR	L	NR
Muchinga	T	T	T	L	T
North Western	T	L	L	L	T
Northern	T	T	T	T	T
Southern	T	T	T	L	L
Western	L	L	NR	L	L

Paper Timeliness: 81% Paper Completeness: 85% Electronic Completeness: 74%

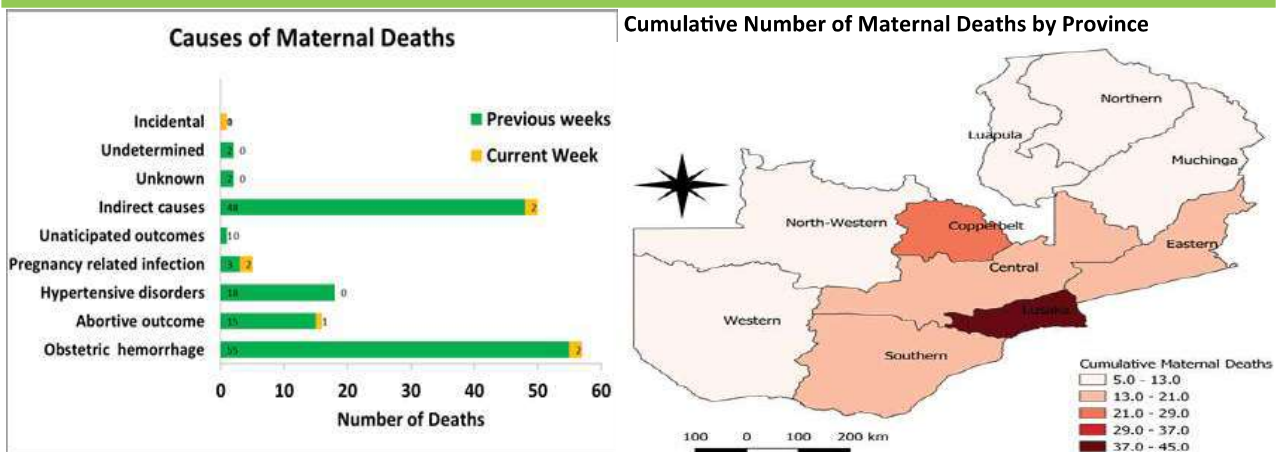
T=Timely L=Late NR=No Report

Summary Report Priority Diseases, Conditions and Events (Week 13)

Disease/ Event / Condition	Week 13			Week 1-13 Cumulative		
	Suspected	Tested	Confirmed	Suspected	Tested	Confirmed
COVID- 19	368	368	27	406	406	29
AFP	3	3	0	48	21	0
Cholera	5	5	0	10	10	2
Meningitis (Neisseria)	2	0	0	14	1	0
Measles	2	1	0	89	31	0
Neonatal Tetanus	0	0	0	4	1	0
Plague	0	0	0	0	0	0
Rabies	0	0	0	6	0	0
Dog bites	248			3,851		
Dysentery	565	3	3	9,235	152	66
Typhoid fever	0	0	0	96	16	2
Yellow fever	0	0	0	0	0	0
VHF	0	0	0	0	0	0
Anthrax	0	0	0	13	0	0
Trypanosomiasis	0	0	0	6	1	0
Influenza	0	0	0	0	0	0
Non Bloody Diarrhoea	12,814	39	0	181,621	46	0
Schistosomiasis (Bilharzia)	327	88	32	4,992	735	237
Malaria	266,766	263,501	155,583	2,927,136	2,677,369	1,505,358
HIV	21,402	20,866	1,125	376,613	347,310	19,846
Tuberculosis	2,847	2,737	152	38,681	33,557	2,833
Maternal Death	14			166		
Total	305,035	287,217	156,879	3,542,656	3,059,295	1,528,344

Maternal Deaths

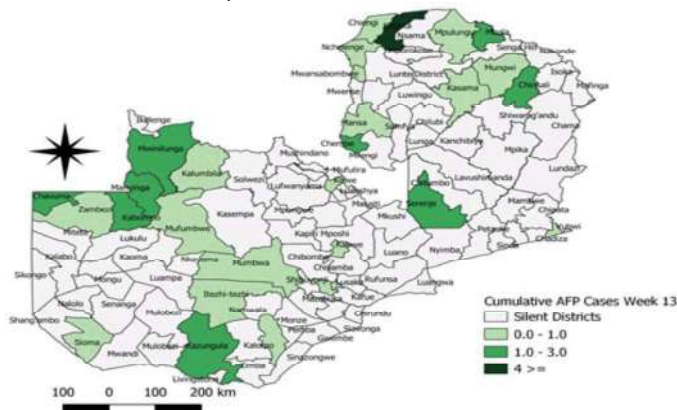
Week 13



- 14 maternal deaths were registered this week.
- Obstetric hemorrhages and Indirect causes continue to be the leading cause of maternal deaths.
- Lusaka province (45) has cumulatively recorded the highest number of deaths thus far.
- In total 166 maternal deaths have been recorded since week 1.

AFP Surveillance

Districts with reported AFP Cases Week 1-13 2020



- Three cases of AFP were reported from Chavuma (1) and Kabompo (1) districts of North Western province and Vubwi (1) district of Eastern province. All three samples were collected for laboratory investigation.
- Cumulatively, 48 AFP cases have been recorded from 26 districts.
- As a result of the cVDPV outbreak, non-AFP target rate has been increased to **4/100,000** population below 15.

- One case of PV1 has been isolated and sent for sequencing from Nchelenge district in Luapula province.
- All results received so far from specimens submitted to the regional lab came out negative for cVDPV
- The risk of cVDPV2 transmission in Zambia is high in districts that are: 1) Silent, 2) Not attaining Non-Polio AFP Rates of 4/100,000 or 80% stool adequacy, 3) Neighboring to countries with active outbreaks and 4) Having low IPV vaccination coverages.

Poliovirus Environmental Surveillance (ES)

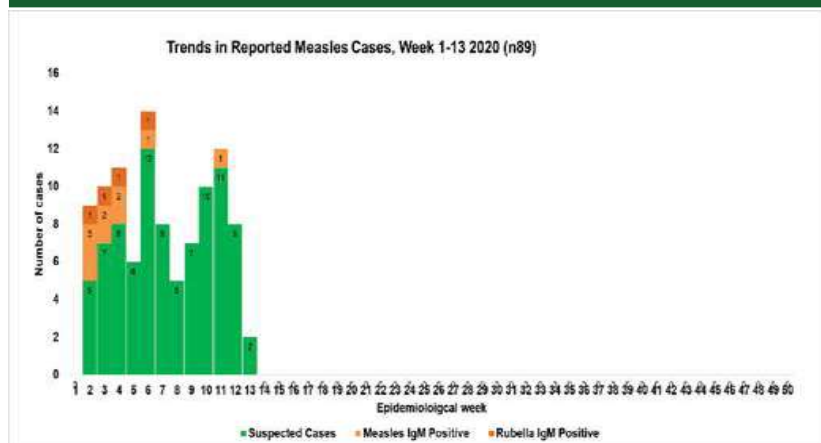
Measles Outbreak

Site Name	Epidemiological Week 2020					
	1	2	3	4	5	6
Province - Lusaka						
Manchinchi						
Kaunda Square Site						
Chelstone Treatment						
Ngwerere Treatment						
Province - Copperbelt	1	2	3	4	5	6
New Kanini Sewer						
Masala Sewer Line						
Nkana East						
Mindolo Treatment						
Kawama Sewer						
Mushili Sewer						
KEY	sabin-link		NPEV		Sabin like + NPQ	
					Pending	

The scheduled collections from the sites in Lusaka provinces have been derailed because of conflicting activities.

- No new cases were recorded from the ongoing Measles outbreak in Northern Province affecting Lunte district.
- Cumulatively, 25 suspected cases have been reported since the outbreak was declared.
- 1 Igm positive case was reported in the affected district.
- The affected health facilities in the district are Mulenga Mapesa and Mukupa Kaoma.

Measles & Rubella surveillance



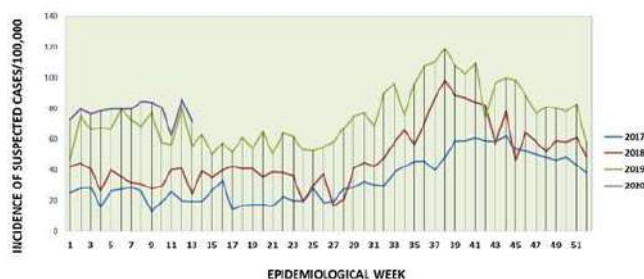
- 2 suspected measles cases were reported in the week under review.
- 1 sample was collected and sent for laboratory investigations.
- Cumulatively, 89 suspected measles cases, 9 measles Igm confirmed cases and 4 confirmed measles rubella cases have been recorded.

COVID-19

- 27 confirmed cases of COVID-19 were reported in the week under review from Lusaka (25) province and on the Copperbelt (2) province.
- There have been no deaths recorded from the COVID-19 cases.
- The confirmed cases are in quarantine at Levy Mwanawasa Hospital and Masaiti district hospital respectively and are receiving medical care.
- A total of 3,142 high risk persons are under observation, this includes travelers from high risk countries as well as persons that may have come in contact with the confirmed cases.
- The University Teaching Hospital Virology Lab (UTHVL) is conducting tests for suspected cases and has to date received 475 samples, 400 have been processed with 29 confirmed positive for COVID-19.

Non-Bloody Diarrhoea

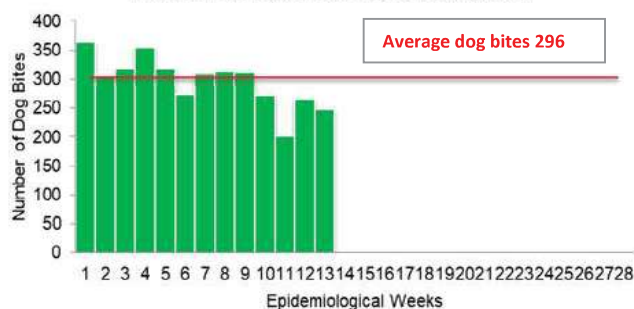
Incidence of IDSR Reported Health Facility Non Bloody Diarrhoea Cases 2017 to 2020



- Cumulatively, 181,621 cases of non-bloody diarrhoea were reported from week 1 to week 13.
- The highest number of cases reported are from Central province representing 15.8% (28,664).
- The highest cumulative incidence reported is from Central province at 1,653 per 100,000 population.

Dog Bites

Trends of Dog Bites Week 1 to 13, 2020 (n3851)



- Cumulatively, 3,851 dog bites have been reported from Week 1 to Week 13.
- Dog bites surveillance serves as a proxy for rabies surveillance both in human and animal health systems.
- Central province has recorded the highest number of dog bites representing 20% (790).

Global/Regional/Public Health Events (Cases/Case Fatality Rate)

Ebola	Measles	Cholera	Poliovirus (c VDPD)	CoronaVirus (COVID-19)
DRC : 3,453 CFR 66.0%	DRC : 29,981 CFR 1.30%	DRC : 4,998 CFR 1.30%	Angola : 131 CFR 0.0%	Global : 724,042 CFR 4.7%
		Moz : 313 CFR 4.2%	DRC : 108 CFR 0.0%	Africa : 3,217 CFR 2.1%

COVID-19 WHO African Region

- During the week under review 2 more countries (Guinea Bisau and Mali) have confirmed COVID-19 cases in the WHO African region bringing the total number of African country's with COVID-19 to 39.
- 2477 new confirmed cases of COVID-19 were reported across all affected countries in week 13, the highest number of new cases so far during a single week.
- Cumulatively, a total of 3,217 confirmed cases and 69 deaths have been reported in the WHO African region.
- In addition to sporadic importation of cases, the majority of the countries in the region are now experiencing local transmission of COVID-19,

Ebola Virus, DRC 2018-2020

- No new confirmed EVD case and no deaths were recorded from DRC outbreak in the week under review.
- Cumulatively, 3,453 suspected cases, 3,310 confirmed cases, 134 probable cases and 2,273 deaths (CFR is 66%) have occurred since the outbreak started earlier in 2018.
- The last day of the week under review marked the 40th consecutive day without recording a confirmed EVD case. This outbreak of EVD would appear to be coming under control.

***For more information look up the WHO Weekly Bulletin on Outbreaks and Other Emergencies and for Global updates on the coronavirus

Public Health Actions

Circulating Vaccine Derived Poliovirus Outbreak

- All provinces are further encouraged to strengthen AFP surveillance using available technological tools and geo code all cases detected.
- The national annualized Non Polio AFP detection rate has increased to 4 cases /100,000 of children detected under 15 years for provinces.
- Note all AFP cases are immediately notifiable and require immediate investigation with new case investigation forms.
- All districts are expected to conduct health facilities integrated supervisory active searches at priority sites as per recommended schedule.
- Provinces to ensure silent districts not reporting AFP/measles cases are supported for active surveillance of AFP cases.

Ebola Virus Disease Preparedness

- All provinces to strengthen EVD surveillance among all health care providers and raise community awareness of EVD prevention.
- Provide weekly reports in IDSR reports of active searches including zero reporting in at risk districts, including ports of entry.
- Ensure epidemic preparedness measures for detecting cases, sample testing/transportation and managing cases are effected.
- All border districts to strengthen point of entry EVD screening including facilitation of cross border monitoring and reporting of suspected EVD cases.

Heightened Surveillance in COVID- 19 High Risk Districts

- Surveillance (including Event Based Surveillance) is being actively conducted at POEs, health facilities, and sentinel sites.
- Screening facilities have been set up at POEs; additionally, screening is being done at the dry port in Makeni for all buses coming in from outside the country.
- Additional thermal scanners to be procured and placed at the POEs to avoid over-crowding and enhance social distancing; set up/identification of designated quarantine facilities to enforce guidelines on quarantine.
- Isolation facilities have also been set up in all high risk districts across the ten provinces;
- Provincial epidemic preparedness committees to engage all relevant government stakeholders and multisector partners required to prevent, control and stop transmission of COVID- 19.

Global Alert of the Coronavirus & Preparedness

- Orientation of staff at points of entry on COVID-19 in all provinces is being conducted in cascade
- Screening at all points of entry to be strengthened especially at international points of entry.
- Circulation of awareness materials to the public and health personnel is being done.
- Report all suspected patients to higher authority immediately.
- Daily monitoring & 14 day quarantine of all travelers from high risk countries is mandatory.
- Strengthen surveillance for all Influenza Like Illness (ILI) and Severe Acute Respiratory Illness (SARI)
- Case definitions to be made available and other IEC materials in health facilities and public places.
- A call centre has been established at ZNPFI and all queries should be channeled to the following numbers: **909/+260 96 4638726/+260 974493553/+260 95 3898941.**

Reported by Surveillance and Disease Intelligence Unit: Muzala Kapin'a, Nkomba Kayeyi, Moses Banda, Mazyanga M Liwewe, Victor Mukonka and Zambia National Public Health Institute (ZNPFI)