

# INTEGRATED DISEASE SURVEILLANCE AND RESPONSE (IDSR) WEEK 09 (24 FEBRUARY-1 MARCH 2020 )

## Surveillance Report

Surveillance and Disease Intelligence Unit  
Zambia National Public Health Institute

**Citation Style For This Article:** Surveillance and Disease Intelligence Unit. Intergrated Disease Surveillance and Response. Health Press Zambia Bull 2020; 04(2); pp 16-20.

### Weekly Summary

#### Current outbreaks and public health threats

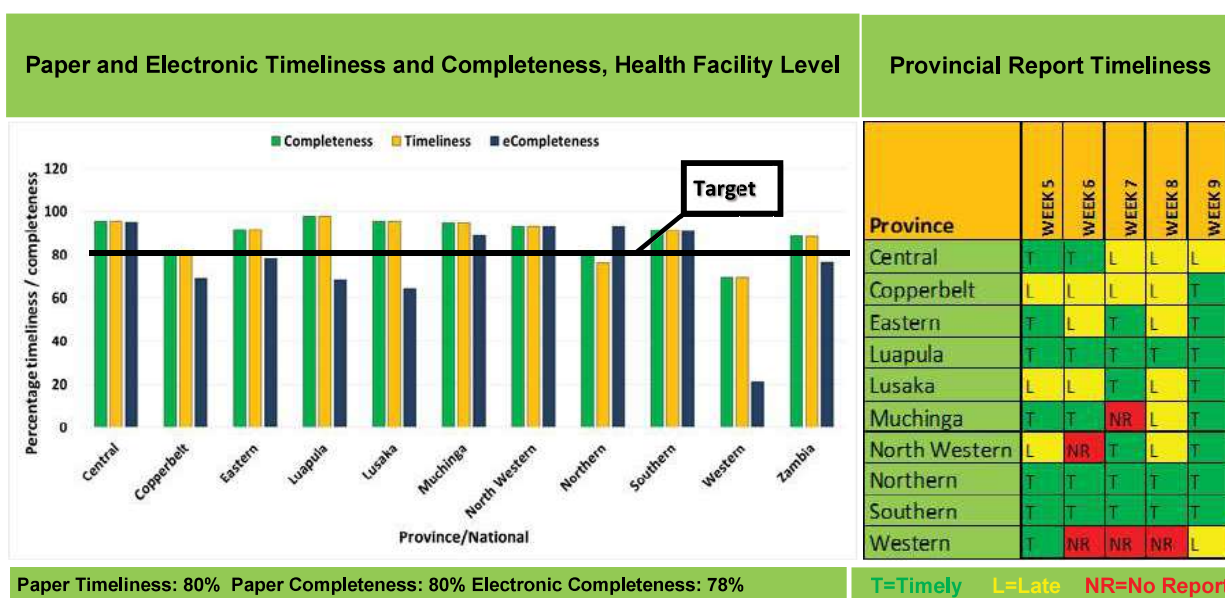
- **cVDPV Outbreak:** No new confirmed cases were recorded this week.
- **Measles Outbreak:** Cumulatively, 5 suspected cases and One confirmed Measles positive IgM were reported from Lunte district but no new cases were reported from Kasama district in the week under review. Both of these districts are in Northern province.
- **Poliovirus:** Two AFP specimens tested positive for PV2 and have been sent for sequencing.
- **Coronavirus (COVID-19):** surveillance ongoing, especially at points of entry. For the week under review # of high risk arrivals screened are as follows: **288** # of contacts: **288**, # high risk persons/contacts monitored: **191**, # suspected COVID-19: **4**, # Probable COVID-19: **00**, # Confirmed COVID-19: **00**

#### Immediately notifiable diseases

- **Acute Flaccid Paralysis (AFP):** Seven cases were reported from Northern (5), Central (1) and North western (1) provinces.
- **Maternal Deaths:** Sixteen maternal deaths were recorded in Central (4), Lusaka (3), Southern (3) Copperbelt (2), Western (2), North western (1) and Eastern (1) provinces.
- **Measles:** Seven suspected measles cases were reported in Northern (4), Eastern (2) and Lusaka (1) provinces.

#### Other diseases/events

- **Typhoid:** Seven suspected cases were reported from North western (6) and Eastern (1) provinces.
- **Rabies:** One suspected rabies death was recorded from Mporokoso district in Northern province.

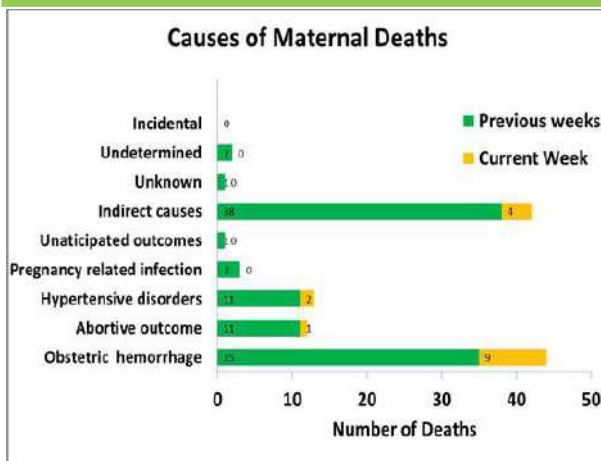


## Summary Report Priority Diseases, Conditions and Events (Week 9)

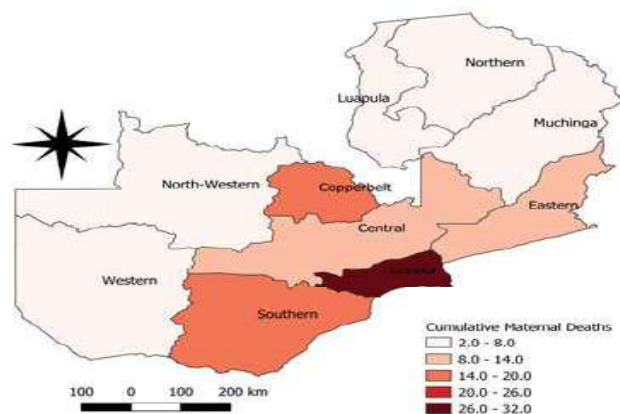
Disease/ Event / Condition	Week 9			Week 1-9 Cumulative		
	Suspected cases	Tested	Confirmed	Suspected cases	Tested	Confirmed
AFP	7	7	0	34	12	0
Cholera	0	0	0	3	3	0
Meningitis (Neisseria)	1	0	0	8	1	0
Measles	7	0	0	58	18	0
Neonatal Tetanus	1	0	0	2	1	0
Plague	0	0	0	0	0	0
Rabies	1	0	0	5	0	0
Dog bites	311			2,863		
Dysentery	695	2	0	6,810	108	59
Typhoid fever	7	0	0	81	16	2
Yellow fever	0	0	0	0	0	0
VHF	0	0	0	0	0	0
Anthrax	0	0	0	10	0	0
Influenza	0	0	0	0	0	0
Non Bloody Diarrhoea	15,036	0	0	127,773	0	0
Schistosomiasis (Bilharzia)	3480	28	22	3,466	506	156
Malaria	209,630	241,569	138,896	1,919,186	1,690,251	929,965
HIV	27,693	29,997	1,724	283,479	257,094	15,012
Tuberculosis	3152	2,926	285	25,917	22,955	2,158
Maternal Death	16			118		
<b>Total</b>	<b>257,036</b>	<b>274,529</b>	<b>140,927</b>	<b>2,369,813</b>	<b>1,970,965</b>	<b>947,352</b>

## Maternal Deaths

Week 9



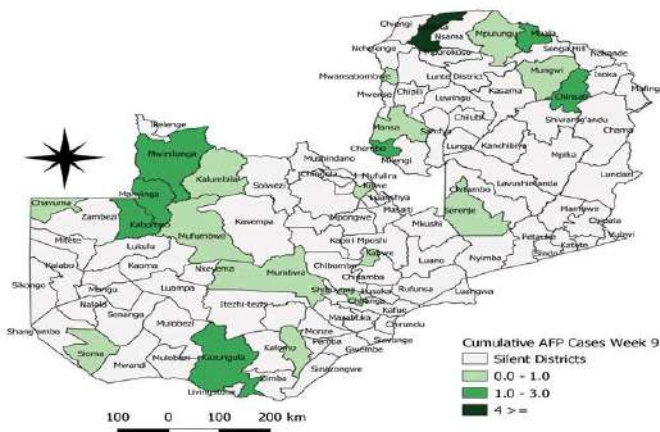
Cumulative Number of Maternal Deaths by Province



- 16 maternal deaths were registered this week.
- Indirect causes and obstetric hemorrhages continue to be the leading cause of maternal deaths.
- Lusaka province (32) has cumulatively recorded the highest number of deaths since week 1.
- In total 118 maternal deaths have been recorded from week 1 to 9.

AFP Surveillance

Districts with reported AFP Cases Week 1-9 2020



- Seven cases of AFP were reported from Kaputa (5) in Northern, Kabwe (1) in Central and Mufumbwe (1) North western Provinces. All samples were collected for laboratory investigation.
- Cumulatively, 34 AFP cases have been recorded from 22 districts.
- As a result of the outbreak, non-AFP target rates has been increased to 4/100,000 population below 15.

- Two AFP specimens tested positive for poliovirus type 2 from Kaputa district in Northern Province and Manyinga district in North western Province.
- The samples have been forwarded to the regional reference laboratory for sequencing and results will be shared as soon as they are available.
- **The risk of cVDPV2 transmission in Zambia is high in districts that are: 1) Silent, 2) Not attaining Non-Polio AFP Rates of 4/100,000 or 80% stool adequacy, 3) Neighboring to countries with active outbreaks and 4) Having low IPV vaccination coverages.**

Poliovirus Environmental Surveillance (ES)

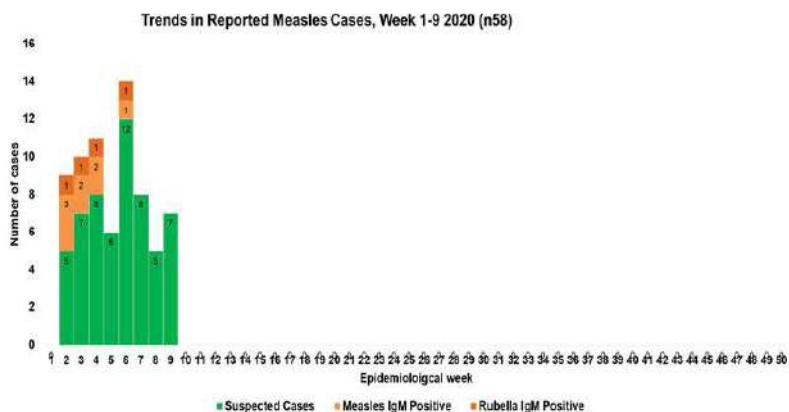
Measles Outbreak

- The scheduled collections from the sites in Lusaka and Copperbelt provinces were conducted



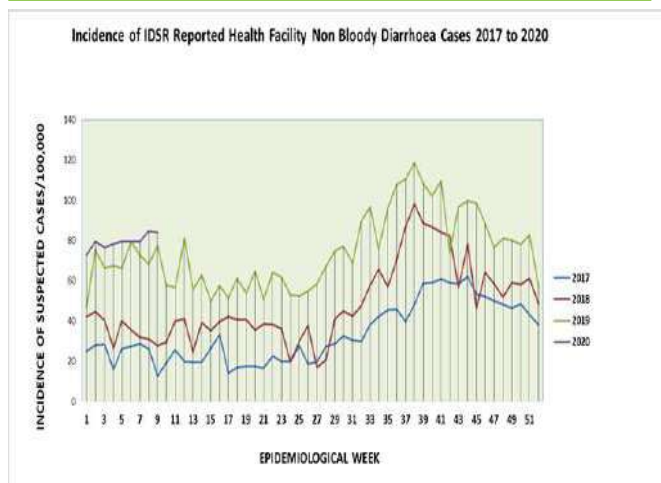
- Measles outbreak in Northern Province is ongoing, affecting Kasama and Lunte districts.
- Cumulatively, 41 cases, 7 confirmed measles Igm and no deaths.
- 36 suspected cases and 6 measles Igm confirmed cases in Kasama
- 5 suspected cases and 1 measles Igm confirmed cases in Lunte district.
- No new cases have been reported from Kasama district in the week under review.
- 3 new suspected cases were recorded from Lunte district.

Measles & Rubella surveillance



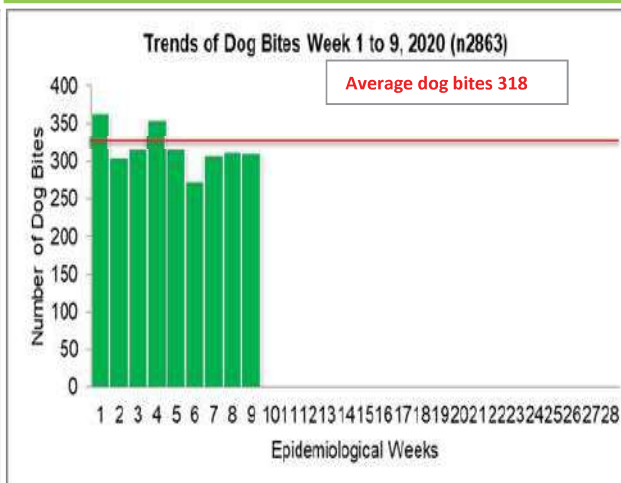
- 7 suspected measles cases were reported this week.
- samples were collected and sent for laboratory investigations
- Cumulative, 58 suspected measles cases and 8 measles Igm confirmed cases have been reported.
- 4 confirmed Measles rubella have been reported.

## Non-Bloody Diarrhoea



- Cumulatively, 127,773 cases of non-bloody diarrhea were reported from week 1 to week 9 2020.
- The highest number of cases reported are from Lusaka province representing 16.4% (20,951).
- The highest cumulative incidence reported is from Central province at 1,154 per 100,000.

## Dog Bites



- Cumulatively, 2,863 dog bites have been reported from Week 1 to Week 9.
- Dog bites surveillance serves as a proxy for rabies surveillance both in human and animal health systems.
- Central province has recorded the highest number of dog bites representing 20% (505).

## Global/Regional/Public Health Events (Cases/Case Fatality Rate)

Ebola	Measles	Cholera	Poliovirus (c VDPD)	CoronaVirus (COVID-19)
DRC : 3,444 CFR 66.0%	DRC: 20,475 CFR 1.20% 1.90%	DRC: 3,575 CFR 1.50% Malawi: 3 CFR 0.0%	Angola: 117 CFR 0.0% DRC: 105 CFR 0.0%	Global: 88,300 CFR 3.6% Africa: 5 CFR 0.0%

## Early Warning Diseases

### Ebola Virus, DRC 2018-2020

- No new confirmed EVD case and no deaths were recorded from DRC outbreak in the week under review.
- Cumulatively, 3,444 suspected cases, 3,310 confirmed cases, 134 probable cases and 2,264 deaths (CFR is 66%) have occurred since the outbreak.
- A total of 139 contacts are currently under follow-up

*Though number of new cases seem to be reducing, the regional risk of spread remains high.*

### COVID-19

- Three countries in the WHO African region, Algeria, Nigeria and Senegal, have confirmed cases of coronavirus disease 2019 (COVID-19).
- A total of five confirmed cases have been reported 3 from Algeria, 1 Nigeria and 1 from Senegal.
- No deaths have been reported.
- A total of 86 contacts to the Algerian (34) and Nigerian (51) cases have been identified and are being followed up.

**\*\*\*For more information look up the WHO Weekly Bulletin on Outbreaks and Other Emergencies and for Global updates on the coronavirus COVID 19 look up John Hopkins dashboard on [https://gisanddata.maps.arcgis.com/apps/opsdashboard/index.html?\\*\\*\\*](https://gisanddata.maps.arcgis.com/apps/opsdashboard/index.html?***)**

## Public Health Actions

### Circulating Vaccine Derived Poliovirus Outbreak

- All provinces are further encouraged to strengthen AFP surveillance using available technological tools and geo code all cases detected.
- The national annualized Non Polio AFP detection rate has increased to 4 cases /100,000 of children detected under 15 years for provinces.
- Note all AFP cases are immediately notifiable and require immediate investigation with new case investigation forms.
- All districts are expected to conduct health facilities integrated supervisory active searches at priority sites as per recommended schedule.
- Provinces to ensure silent districts not reporting AFP/measles cases are supported for active surveillance of AFP cases.

### Ebola Virus Disease Preparedness

- All provinces to strengthen EVD surveillance among all health care providers and raise community awareness of EVD prevention.
- Provide weekly reports in IDSR reports of active searches including zero reporting in at risk districts, including ports of entry.
- Ensure epidemic preparedness measures for detecting cases, sample testing/transportation and managing cases are effected.
- All border districts to strengthen point of entry EVD screening including facilitation of cross boarder monitoring and reporting of suspected EVD cases.

### Heightened Surveillance in Cholera Hotspots

- With the increased rainfall patterns and imminent flooding that raises risks for diarrheal diseases, cholera hotspots are encouraged to continue and intensify surveillance and review of epidemiological trends to quickly detect and respond to changes.
- All provinces and districts are further advised to have sufficient stock piles of chlorine (granular & soluble).
- Continue to provide health education to sensitize communities and health workers on cholera preventative measures.
- WASH continue water monitoring and distribution of chlorine in identified at risk populations.
- Provincial epidemic preparedness committees to engage all relevant government stakeholders and multisector partners required to prevent cholera outbreaks.

### Global Alert of the Coronavirus & Preparedness

- Orientation of staff at points of entry on COVID-19 in all provinces is being conducted in cascade
- Screening at all points of entry to be strengthened especially at international points of entry.
- Circulation of awareness materials to the public and health personnel is being done.
- Report all suspected patients to higher authority immediately.
- Strengthen surveillance for all Influenza Like Illness (ILI) and Severe Acute Respiratory Illness (SARI)
- Case definitions to be made available and other IEC materials in health facilities and public places.
- A call centre has been established at ZNPHI and all queries should be channeled to the following numbers: **+260 96 4638726/+260 974493553/+260 95 3898941.**

**Reported by Surveillance and Disease Intelligence Unit:** Muzala Kapin'a, Nkomba Kayeyi, Moses Banda, Mazyanga M Liwewe, Victor Mukonka and Zambia National Public Health Institute (ZNPHI)